



The Homeless to Homes Plan: Implementation Update

Kevin Finn, Executive Director
kfinn@cincinnatioc.org
513.263.2788

February 15, 2011

Cincinnati/Hamilton County Continuum of Care for the Homeless, Inc.

Goal

To reduce homelessness by 50% in 5 years

Vision Statement

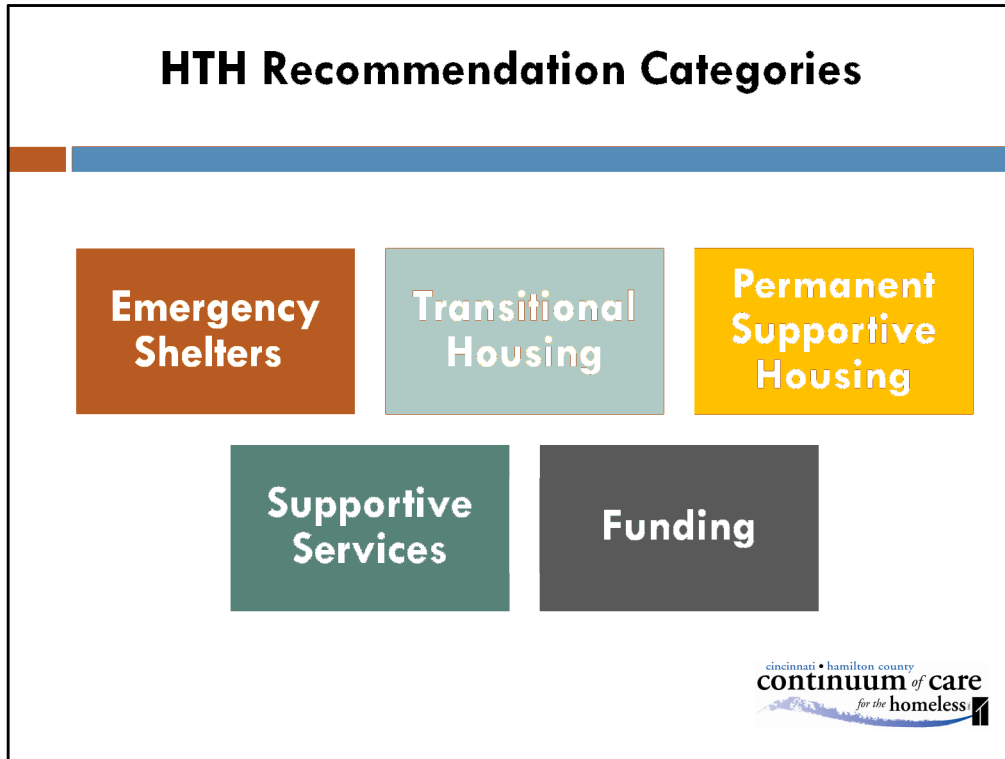
To lead a coordinated, community effort to end homelessness

CoC, Inc. seeks to do the following to reduce homelessness:

- ▣ Prevent at-risk households from becoming homeless
- ▣ House people who are homeless
- ▣ Reduce the recurrence of homelessness

CoC, Inc. annually allocates and oversees the following U.S. Department of Housing and Urban Development resources for the City of Cincinnati and Hamilton County:

- Supportive Housing Program (SHP) funds, which support transitional housing, permanent supportive housing, and services only programs.
- Shelter Plus Care funds, which support permanent supportive housing programs.
- Emergency Shelter Grant (ESG) funds, which support emergency shelter operations.
- Housing Opportunities for Persons with AIDS (HOPWA) funds, which provide housing and housing stability services within our local Eligible Metropolitan Statistical Area (EMSA)
- Community Development Block (CDBG) funds, budgeted by the City of Cincinnati for the purpose of making capital improvements to emergency shelter facilities.
- Homelessness Prevention/Rapid Re-Housing (HPRP) funds, a part of the American Recovery and Reinvestment Act (ARRA), which support homelessness prevention and rapid re-housing activities.



HUD Definitions:

Emergency Shelters—Any facility, the primary purpose of which, is to provide temporary shelter for the homeless.

Transitional Housing—A project that has as its purpose facilitating the movement of homeless individuals and families to permanent housing within a 6-24 months.

Permanent Supportive Housing—Long-term housing that has supportive services for homeless individuals with disabilities. This type of supportive housing enables special needs populations to live as independently as possible in a permanent setting. The supportive services may be provided by the organization managing the housing or coordinated by the applicant and provided by other public or private service agencies. Permanent housing can be provided in one structure or several structures at one site or in multiple structures at scattered sites.

Supportive Services—Services that assist homeless participants in the transition from streets or shelters into permanent or permanent supportive housing, or that assist persons living successfully in housing.

Funding—Using existing funds more strategically; not just new money

Emergency Shelter Recommendations

Maintain current inventory

- Inventory – 422 beds
- Focus on increasing capacity in housing, not shelter

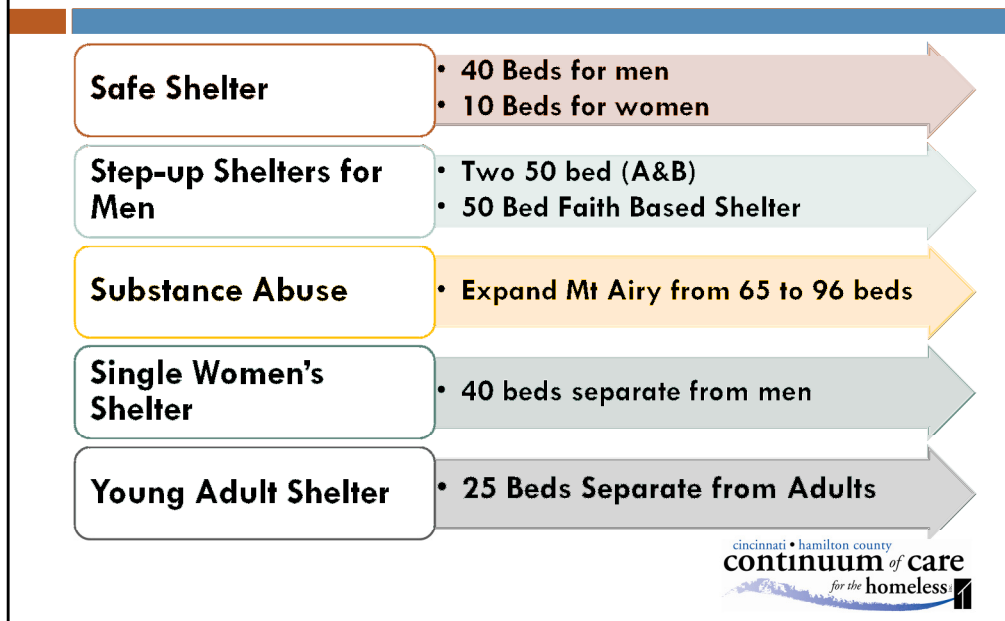
Increase number of residents receiving services

- Most clients receiving services, a few not. Not the other way around



The HTH Plan recommends maintaining the same number of beds, but makes some changes to the distribution of the beds.

Shelter Recommendations



- 50 bed walk-in shelter for men and women who are not ready to engage in services
- 40 bed single women's shelter, separate from the men's shelters
- 25 bed young adult shelter for ages 18-24
- Three redesigned Step-up shelters for single men
 - Men's A (50 beds),
 - Men's B (50 beds), and
 - Faith Based (50 beds).
 This recommendation rearranges the current bed configuration but maintains the total number of beds.
- Expand Mt. Airy shelter from 65 to 96 beds for substance abuse treatment shelter
- There are no recommended changes for the system's other specialized shelters: Center for Respite Care, Catholic Worker House, Off the Streets, and the YWCA's Battered Women's Shelter.

Shelter Progress

Safe Shelter	<ul style="list-style-type: none"> • 60 beds at the DIC for men • 10 Safe beds for women at YWCA
Step-up Shelters for Men	<ul style="list-style-type: none"> • Two Step-up Dorms at DIC – 60 beds each • 75 beds City Gospel Mission (2012)
Substance Abuse	<ul style="list-style-type: none"> • Mt Airy Shelter is working on a relocation plan; would expand to 96 beds when moves (2012-2013)
Single Women's Shelter	<ul style="list-style-type: none"> • YWCA Single Women's shelter under development to open early 2012 • 40 Beds plus 10 Safe Shelter Beds
Young Adult Shelter	<ul style="list-style-type: none"> • Lighthouse Youth Center to open Fall 2011 with 28 Beds



Men's Shelter Beds

Safe Shelter

The Drop Inn Center will continue to offer the Safe Shelter beds for men who need shelter but who are not ready to avail themselves of any other services.

Step-up Shelters

- The DIC has made internal changes that are consistent with HTH recommendations, and which enhance the services they offer to single men.
- The DIC is now offering a step up dorm for men who are employed or seeking employment, and is preparing to open a second rapid re-housing dorm for newly-homeless men, to move them quickly out of homelessness and into stable housing.
- The City Gospel Mission is providing the faith-based shelter and is in the process of developing a new shelter for this purpose. The new, relocated shelter will be larger and will also have transitional housing on the same site, but separated from the shelter.

Substance Abuse –Talbert House would like to expand the substance abuse treatment beds at Mt. Airy, but they cannot expand in their current location. They are looking for an alternate site for this shelter to include 96 beds.

Single Women's Shelter –In Summer 2010, the YWCA was selected to develop a new women's shelter, and they are currently working to develop this project. The YWCA will house the 10 women's safe shelter beds, as well as at least 40 step-up beds.

Young Adult Shelter – Lighthouse Youth Services is currently remodeling and expanding a building they plan to open in the Fall 2011. It will have 29 beds for young homeless people and will also house LYS's Anthony House Day Services.

Transitional Housing Recommendations

Single Females	• 50 Beds
Young Adults	• 40 Beds
Jail Diversion	• 30 Beds
Street Outreach Transitional Housing	• 16 Beds
Faith Based	• 40 Beds

cincinnati • hamilton county
continuum of care
for the homeless

The Plan:

A minimum of 191 site-based or scattered-site transitional housing beds are recommended in order to (a) allow emergency shelters to serve as short term facilities, (b) enable longer-term support for persons who require longer lengths of stay to achieve their income or housing goals, and (c) reduce the recidivism rate of homelessness and/or disabled persons returning to homelessness when they are placed in permanent housing before they are ready or able to succeed.

- 50 beds for single women
- 40 beds for young adults
- 30 site based beds for non-violent offenders (jail diversion)
- 16 beds for persons on the streets or in places unfit for human habitation
- 40 beds for faith-based programs
- The remaining beds should be dispersed according to program-design and funding availability

Transitional Housing Progress

Single Females	<ul style="list-style-type: none"> • YWCA applied for HUD Continuum of Care Funds in 2010 for this purpose
Young Adults	<ul style="list-style-type: none"> • Lighthouse Youth Services applied for HUD Continuum of Care Funds in 2010 for this purpose
Jail Diversion	<ul style="list-style-type: none"> • Due to homeless people less frequently being held in the jail, less of a priority at this time
Street Outreach TH	<ul style="list-style-type: none"> • Need to identify source of funds for services, overnight staffing, etc.
Faith Based	<ul style="list-style-type: none"> • City Gospel Mission will add such transitional housing at new facility

cincinnati • hamilton county
continuum of care
 for the homeless

2010 Cincinnati/Hamilton County Continuum of Care Application to HUD

Our community's 2010 Continuum application included requests for funding for two new transitional housing programs that were recommended by the Homeless to Homes Plan. The funding awards for these programs should be announced in June 2011.

- YWCA has applied for 24 new units of Transitional Housing for single women to assist with exiting homeless single women from the new single women's shelter, once open.
- Lighthouse Youth Services has applied for 20 units of Transitional Housing for young homeless individuals to assist with exiting such individuals from the new young adult shelter.

Jail Diversion—The Justice Center is no longer holding people for minor, non-violent crimes and therefore this is not the priority it was at the time the Plan was written.

Street Outreach Transitional Housing—The HTH Plan specifically recommends transitional housing for individuals currently living on the street but who are unwilling or unable to go into shelter. An additional funding source to cover the cost of services will be needed to support the implementation of this and other Transitional Housing programs.

Faith Based—City Gospel plans to add Transitional Housing capacity when they move to their new facility. At that time they will increase their Transitional Housing beds from 15 to 25.

Since the submission of the Homeless to Homes Plan, 125 units of Transitional Housing have been created using Federal Stimulus Funds (3 year funding).

Permanent Supportive Housing Recommendations

A minimum of 125 site-based units/year

79 scattered site units/year

Establish partnership with National
Church Residences

Work with CMHA to increased Section 8
housing

Develop Good Neighbor Agreements



1. A minimum of 125 units per year of site-based and 79 scattered-site units of Permanent Supportive Housing for the next five years (1020 new units total)
2. Establishment of partnership with the National Church Residences to develop PSH in Cincinnati/Hamilton County
3. Encouragement of PSH programs to work with CMHA to increase amount of project-based Section 8 housing allocated to PSH
4. Development of a “Good Neighbor Agreement” by all new housing programs with adjacent property owners (residents and businesses).

Permanent Supportive Housing Progress

2010 HUD Continuum of Care Application Included:

Single females – 45 units for women at the Anna Louise Inn-
Cincinnati Union Bethel and Over the Rhine Community Housing

Medically disabled adults – 20 new scattered-site program
for homeless individuals by Center for Respite Care



The Continuum of Care HUD funding applied for in October 2010 will be announced in May or June 2011 and funding will begin summer of 2011.

2010 Continuum of Care Application:

Single Females—Anna Louise Inn—Shelter Plus Care subsidies for 45 of the new units for single women at the Anna Louise Inn (Cincinnati Union Bethel/Over-the-Rhine Community Housing)

Medically disabled adults –Center for Respite Care—applied for funding for 20 new scattered site units for medically disabled adults

More Permanent Supportive Housing Progress



Jimmy Heath House for chronically homeless with disabilities opened December 2010



Dennison Hotel being redeveloped as PSH by 3CDC, Model Group and Talbert House



National Church Residences – will file for tax credits for a Cincinnati project in 2011



CMHA now planning to make ongoing site-based subsidies available for multiple PSH projects

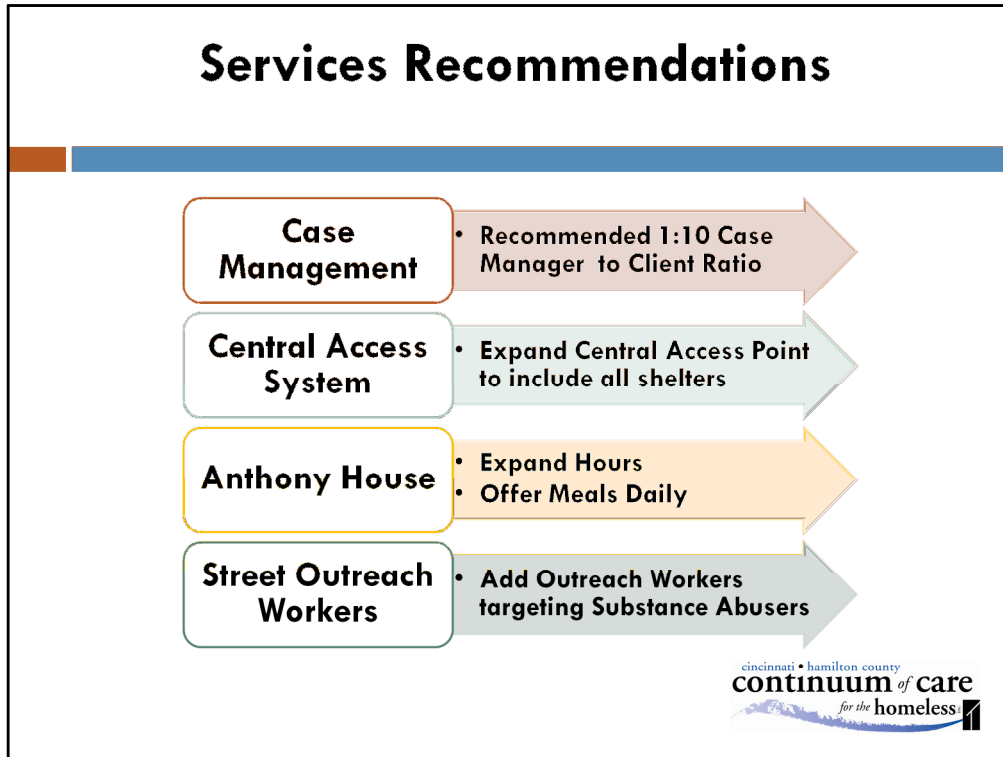


Jimmy Heath House is Permanent Supportive Housing for 25 chronically homeless individuals with disabilities. The Jimmy Heath House was awarded Continuum of Care funding by HUD in 2006 and 2008.

Dennison Hotel, when completed, will have 63 units of PSH with services provided by Talbert House.

NCR had planned to apply for tax credits in 2010 but were unable to identify an appropriate site by the application deadline. NCR is very committed to building and operating a property in Cincinnati, and is currently working with the City and the CoC to locate a building site. NCR will apply to the Ohio Housing Finance Agency (OHFA) for tax credits in the fall.

CMHA has been involved in planning to provide site-based subsidies for Permanent Supportive Housing projects, in collaboration with NCR, 3CDC, and others.

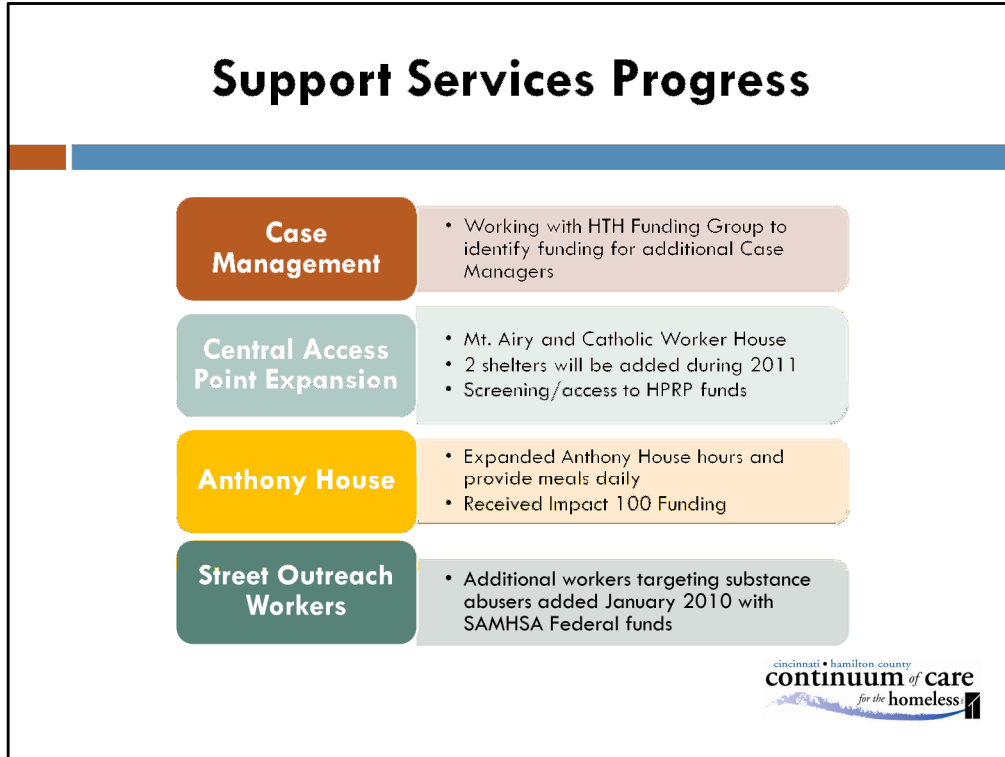


Case Management—Establish a 1:10 homeless case manager to client ratio for all shelters serving homeless individuals

Central Access System—Coordinate and expedite the flow of all single homeless individuals into and through the shelter system, connecting clients with the most appropriate shelter and services.

Anthony House—Expand the hours and services provided.

Street Outreach Workers – Add four new street outreach workers who specialize in substance use disorder treatment to engage street homeless in services and promote harm reduction and treatment in order to address a specific population of street homeless who are currently without outreach services.



Case Management—We are seeking funds to increase the number of case managers serving the homeless. Shelters are working to increase the number of clients engaged with CMs on plans to move out of homelessness.

Central Access Point Expansion

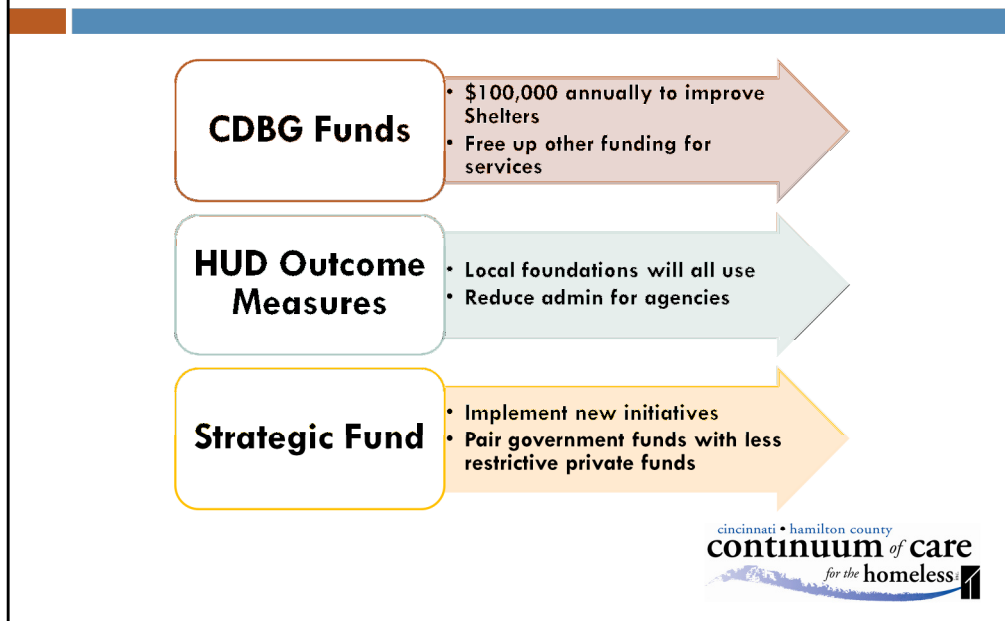
In addition to the family shelters...

- Mt. Airy Shelter now uses CAP for all of their intakes.
- Catholic Worker House uses CAP but also takes walk-ins.
- City Gospel Mission plans to begin using CAP when they have moved into a new facility.
- The YWCA plans to use CAP for their intakes when they open the women's shelter.
- The Drop Inn Center is considering using CAP as they make changes to their procedures and structure
- CAP is used for entry into American Recovery & Reinvestment Act (ARRA) homeless prevention programs.

Anthony House—In addition to the expansion of services, Anthony House will be moved and located with the new young adult shelter also operated by LYS.

Street Outreach Workers—Additional street outreach workers targeting substance abusers were added to system in January 2010 as part of new \$1.3 million SAMHSA grant paired with CoC funding for Jimmy Heath House plus 35 Shelter Plus Care units.

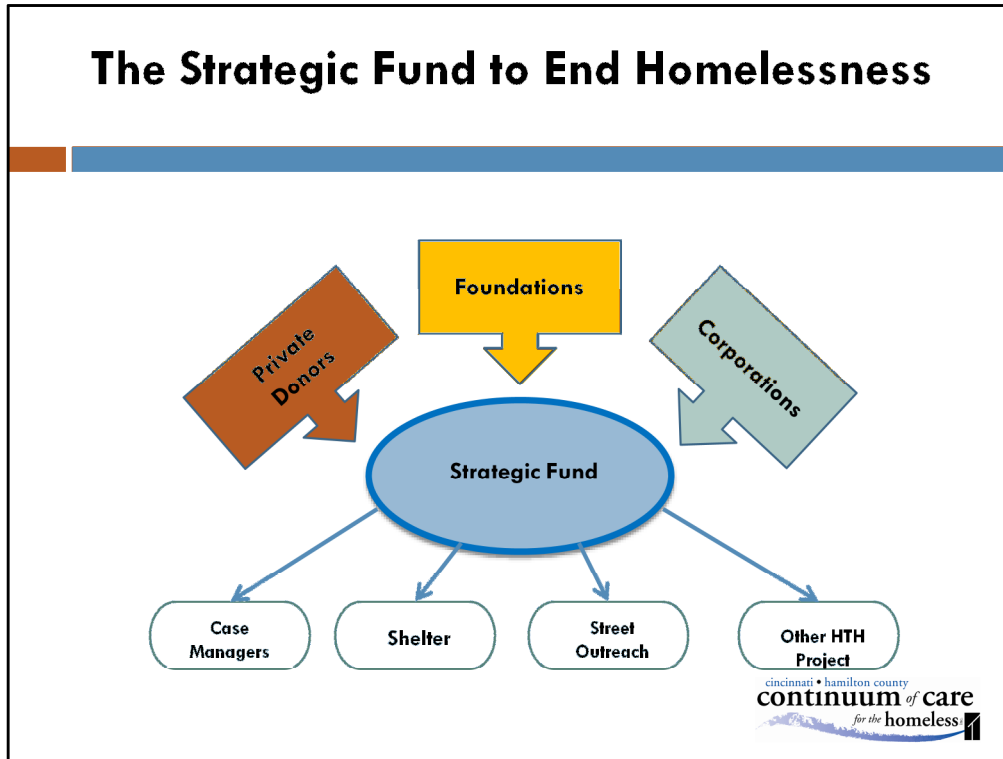
Many Funding Recommendations



CDBG Funds—In order to use funds for capital to be used for capital project, thereby freeing up more flexible foundation and grant funds for operations and services, it is recommended that a \$100,00 allocation of Community Development Block Grant funds be established in FY2010 and designated for emergency capital repairs of facilities within the CoC system and administered by the CoC, Inc.

HUD Outcome Measures—All local foundations, the United Way, the City of Cincinnati and Hamilton County are being requested to use the HUD/CoC outcome measure, as recorded in the Homeless Management Information System (HMIS), for any facility resulting from this plan.

Fund for Innovation— The implementation of the Homeless to Homes plan will require the cooperation and innovation of the public and private funders in our region. In that spirit, the Smart Funding Subcommittee convened local foundations, the United Way, and City of Cincinnati staff to obtain input as the plan was being developed and to create recommendations on funding.



Strategic Fund to End Homelessness

A fund which pairs private, foundation, and corporate dollars with federal government funds already overseen by the CoC in ways that will reduce and end homelessness.

Contributors can designate which agency, program or subgroup they want to support with their funds.

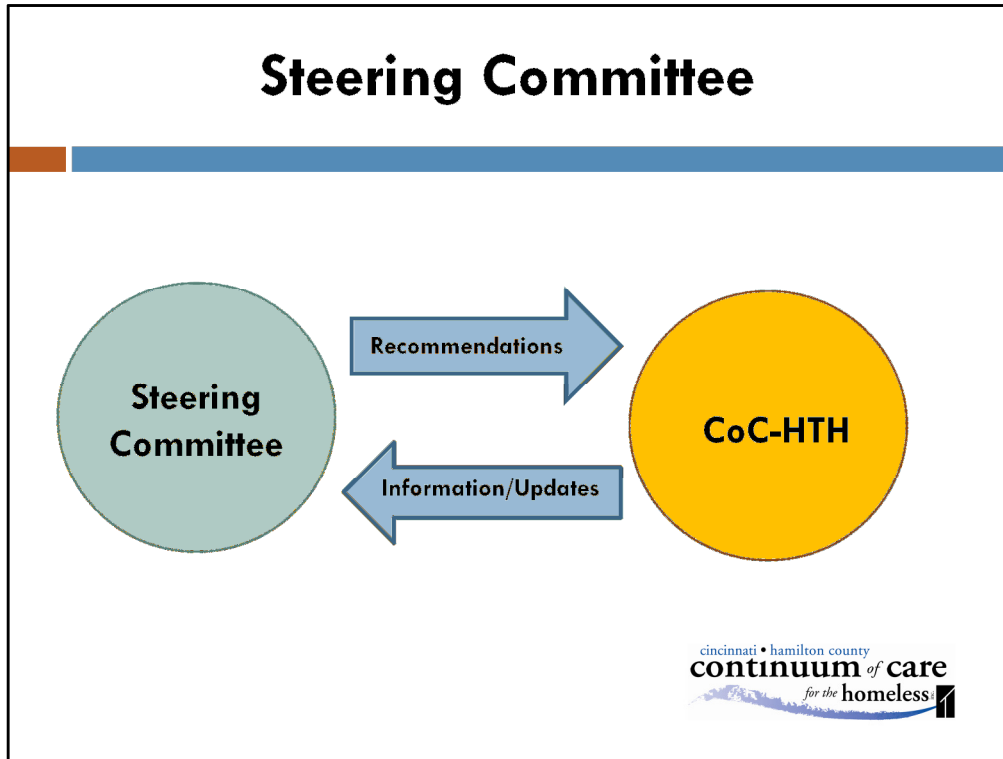
The CoC, Inc. can assure that funds are distributed to projects that are critical to reducing homelessness locally.

The CoC, Inc. can more effectively use these contributions to leverage restricted funds.

Both the U.S. Bank/Haile Foundation and the Greater Cincinnati Foundation have provided funding to the CoC, Inc. to development of the internal capacity to manage such funds.

Community Development Block Grant (CDBG) funds

The City of Cincinnati has made available \$100,000 of CDBG funding to be used in 2011 for emergency shelter improvements, freeing up more flexible foundation and grant funds for operations and services. These funds will be overseen by the CoC, Inc. which began the process of allocating these funds, with the emergency shelters, in January, 2011.



The CoC, Inc. reconvened the Homeless to Homes Steering Committee in January 2011. The current members of the Homeless to Homes Steering Committee are:

Barbara Terry, United Way of Greater Cincinnati (Chairperson)
 Arlene Nolan, Drop Inn Center
 Linda Seiter, Caracole, Inc.
 Bob Mecum, Lighthouse Youth Services
 Gary Lindgren, Cincinnati Business Committee
 Lynn Marmer, The Kroger Co.
 Megan Wolfer, the Charlotte R. Schmidlapp Fund, Fifth Third Bank
 H.F. (Pat) Coyle, Jr., Metropolitan Area Religious Coalition
 Rev. Aaron Greenlea, Co-chairperson, Greater Cincinnati Faith Alliance
 Roger Howell, President, City Ministries, representing Evangelical Church Community
 Michael Cervay, City of Cincinnati Department of Community Development
 Susan Walsh, Hamilton County Community Development Department
 Moira Weir, Director, Hamilton County Department of Job and Family Services
 Josh Spring, the Greater Cincinnati Coalition for the Homeless

Questions?

February 15, 2011